

# Elevate Your Data Strategy:

Transform Data  
Chaos into  
Business Brilliance.



Imagine a world where your data—sprawled across multiple platforms, cloud services, and physical locations—coalesces into a unified, 360-degree view. Welcome to SCIKIQ, a single platform where automation meets AI to streamline data integration, curation, governance, and visualization.

No more sifting through multiple vendors; no more disjointed data views. SCIKIQ's heavily AI and ML-infused suite handles everything from real-time data cataloging to active metadata and data lineage, all while prioritizing data protection and quality.

Break free from data silos, access information in real-time, and empower your business users to leverage this goldmine for unparalleled business growth. With SCIKIQ, your data is not just accessible, it's a strategic asset. Whether you're operating in the cloud, hybrid, or multi-cloud environments, SCIKIQ is your one-stop platform for seamless, real-time data access and management. Why pick through your data piecemeal when you can have a feast of actionable insights? That's the SCIKIQ difference—simple, secure, and strategically brilliant.

**Engineered for the  
most demanding  
enterprise needs,  
SCIKIQ eradicates  
data silos, enabling  
real-time, reliable  
insights for informed  
decision-making.**



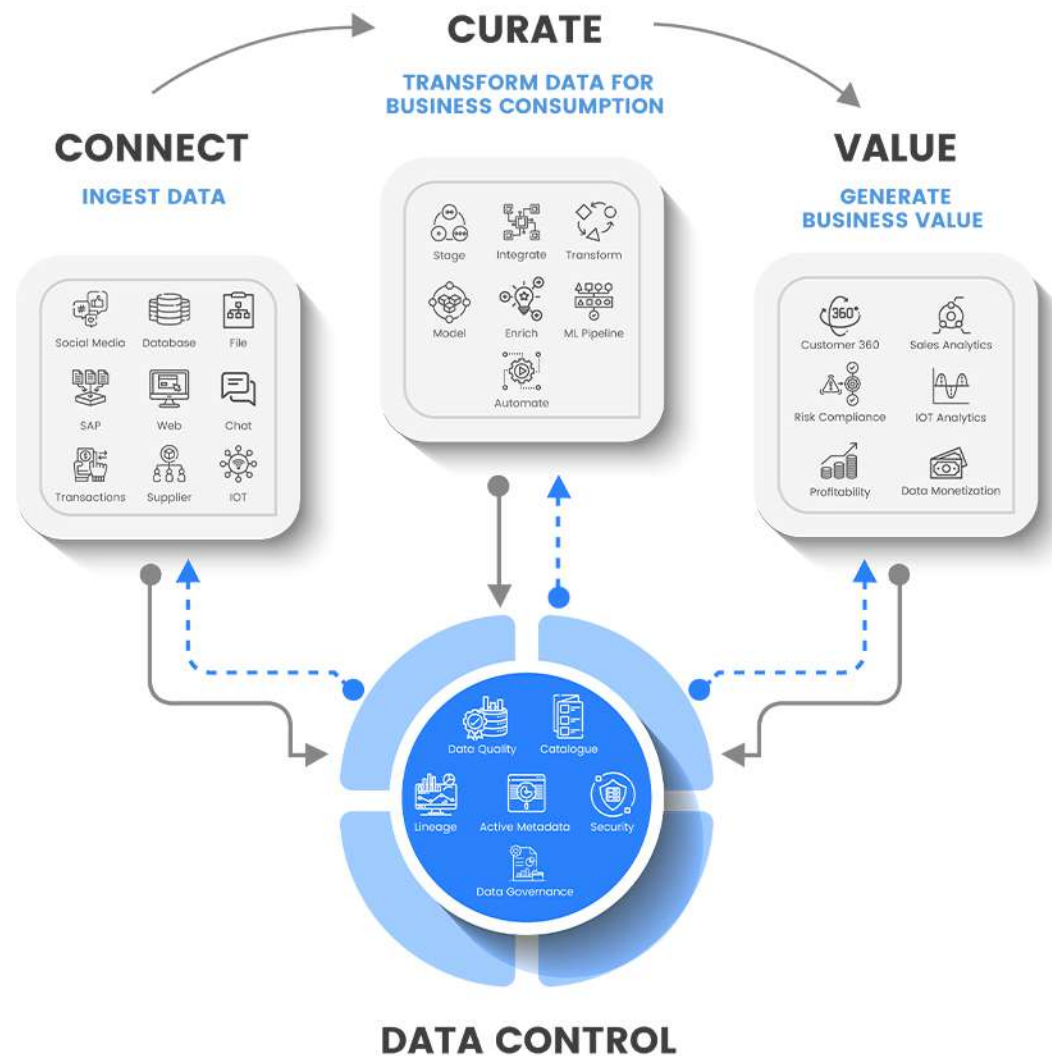
SClkiQ has been  
recognized among  
**34 leading  
platforms**  
in Augmented  
Business Intelligence.

Data fabric is a sophisticated architecture designed to cohesively manage and organize dispersed data across various platforms and environments, delivering a unified, 360-degree view of data in real-time. Its ultimate goal is to democratize access to a singular, transparent view of data across the organization.

Utilizing high-caliber AI and ML algorithms, SCIKIQ's platform comprehensively addresses data cataloguing, active metadata, data lineage, and data security, ensuring an uncompromised, high-quality view of your data.

With SCIKIQ, you're not merely managing your data; you're optimizing it for maximal efficiency and profitability within a singular, user-friendly platform. Experience seamless data management without the technological complexities— SCIKIQ makes it possible.

# Data Fabric Architecture:



# SCIKIQ's 4C Framework

Unlock the Power of Data with SCIKIQ's 4C Framework: Connect, Curate, Control, and Consume.

It's the seamless journey from real-time data integration to impeccable governance, from masterful curation to effortless consumption.

SCIKIQ is your data's best friend—a modern, holistic, AI-powered suite designed to make data work for you, not against you. Transform your decision-making and your business with the SCIKIQ 4C Framework, where each 'C' is a cornerstone to your ultimate success.



# SCIKIQ

## Connect:

**Not just ETL. This is Data integration Redefined. It is The modern solution for multi-cloud & multi-vendor, real-time data integration. It helps you Instantly Sync, Analyze, and Share Your Data Across Teams. Seamless integration with major platforms like SAP, Oracle or any cloud providers—no tech headaches, just business growth. Set up in minutes, scale effortlessly, and make real-time, data-driven decisions.**



# SCIKIQ

## Control:

Think of Automating the data Governance with world class platform. SCIKIQ is like having a personal data concierge—automating compliance, quality checks, and more. Free yourself from the complexities of data management, and get the clarity you need to make decisions with confidence. When you partner with SCIKIQ, you're not just streamlining governance; you're unlocking the full potential of your business.





# SCIKIQ

## Curate:

Think of it as your all-in-one data genie. From input to transformation to presentation, Curate does the heavy lifting for you, thanks to AI and machine learning. SCIKIQ Curate's Data Prep Studio lets you effortlessly filter, sort, and transform your data, however complex. Our studio is your sandbox for data transformation, offering comparison, logical, statistical, and mathematical functions all designed to make your data work for you. It's not just data management; it's data mastery, simplified.





# SCIKIQ

## Consume:

Where reporting isn't just trusted, it's effortless. Imagine a world where data discrepancies are a thing of the past, thanks to our innovative unified semantic layer and virtualization engine. SCIKIQ turns multiple BI platforms into a harmonious symphony, sharing a single business glossary and metric standard. No more conflicting reports, just a single, unimpeachable source of truth. Make business intelligence not just intelligent, but brilliantly clear. That's the SCIKIQ difference."

A hand holding a glowing globe with the text 'Innovations World class Data lineage' overlaid.

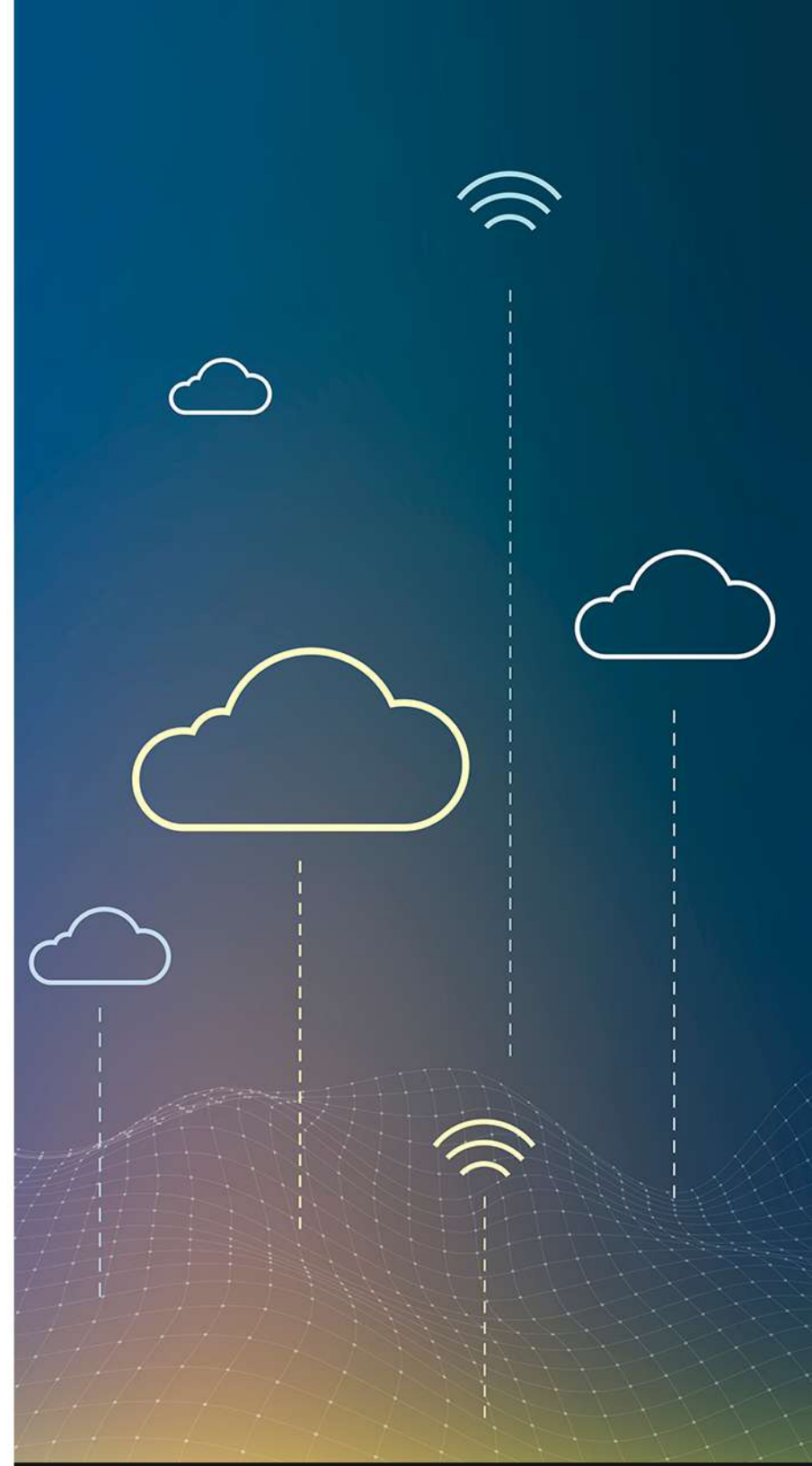
**Innovations**

# World class **Data lineage**

Experience world-class Record to Report data lineage with SCIKIQ, globally recognized and endorsed by leading SI and Technology vendors. Our advanced platform meticulously traces the journey and transformations of your data, offering unparalleled visibility and control. With SCIKIQ, you're not just gaining access to top-tier data lineage; you're aligning your business with a globally recognized standard of excellence.

# Managing Multi-Cloud Data Fragmentation

SCIKIQ excels in multi-cloud data integration, seamlessly unifying fragmented data across AWS, Google, Azure, and on-premises environments. Organizations often face challenges when their data is scattered across multiple cloud providers and on-premises environments. SCIKIQ's hybrid and multi-cloud data fabric platform steps in to bridge these gaps and unlock the full potential of organizational data.



# Redefining **Reporting** Standards

SCIKIQ's innovative approach to data visualization is world-class, setting a new standard for business intelligence. By establishing a common semantic layer across multiple BI platforms, we remove the complexities and offer a unified, trusted source of data. This enables businesses to unlock deeper insights and make data-driven decisions with unparalleled accuracy and confidence.



# Contact

**Address:**

1st Floor, Tower-A, Millennium Plaza,  
Sushant Lok Phase I, Sector 27,  
Gurugram, Haryana 122001

**Email:**

[enquiry@scikiq.com](mailto:enquiry@scikiq.com)

**Website:**

[www.scikiq.com](http://www.scikiq.com)

